

CANOPY SYSTEMS

SPIDER FITTINGS

Fixing detail can be tailored for individual projects including side fixed, bottom fixed or top mounted fittings to meet the requirements of small canopies through to complex glass walls.

Manufactured from 316 stainless to maximise the products life and appearance and available in polished or satin finishes.

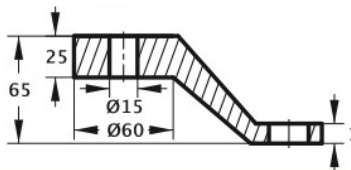
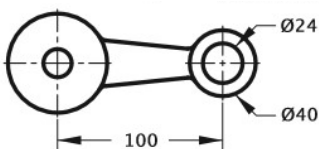
Swivels are available for toughened, laminated or double glazed units.



Code	Description	Finish
------	-------------	--------

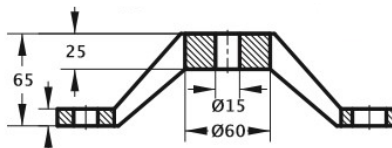
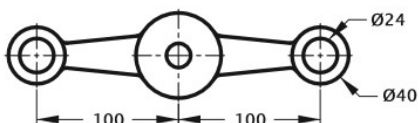
Single Arm Spider 90°

SP1PS	Single Arm 316 Stainless	PS
SP1SS	Single Arm 316 Stainless	SS



2 Way Spider 180°

SP2PS	Double Arm 316 Stainless	PS
Sp2SS	Double Arm 316 Stainless	SS



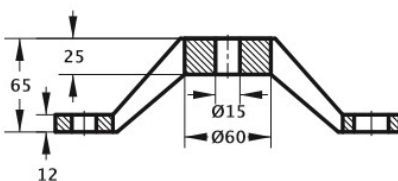
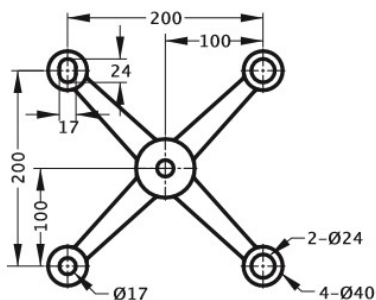
CANOPY SYSTEMS

Code	Description	Finish
------	-------------	--------

4 Way Spider 45°

SP4PS	Quad Arm 316 Stainless	PS
-------	------------------------	----

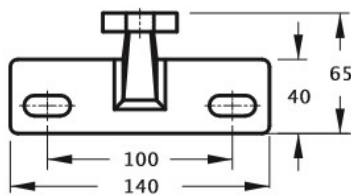
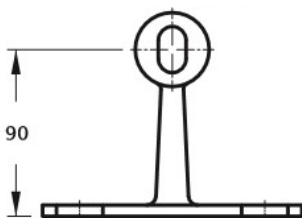
SP4SS	Quad Arm 316 Stainless	SS
-------	------------------------	----



Side Mounted Single Spider

SP20PS	Side Mounted Single	PS
--------	---------------------	----

SP20SS	Side Mounted Single	SS
--------	---------------------	----



Adjustable Swivel

SP5PS	Adjustable Swivel Complete	PS
-------	----------------------------	----

SP5SS	Adjustable Swivel Complete	SS
-------	----------------------------	----

